

A Common Tool for Building Trilinos: Introduction to GenConfig



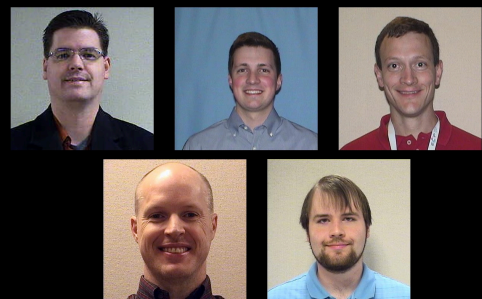
Software Engineering
& Research
Department 1424



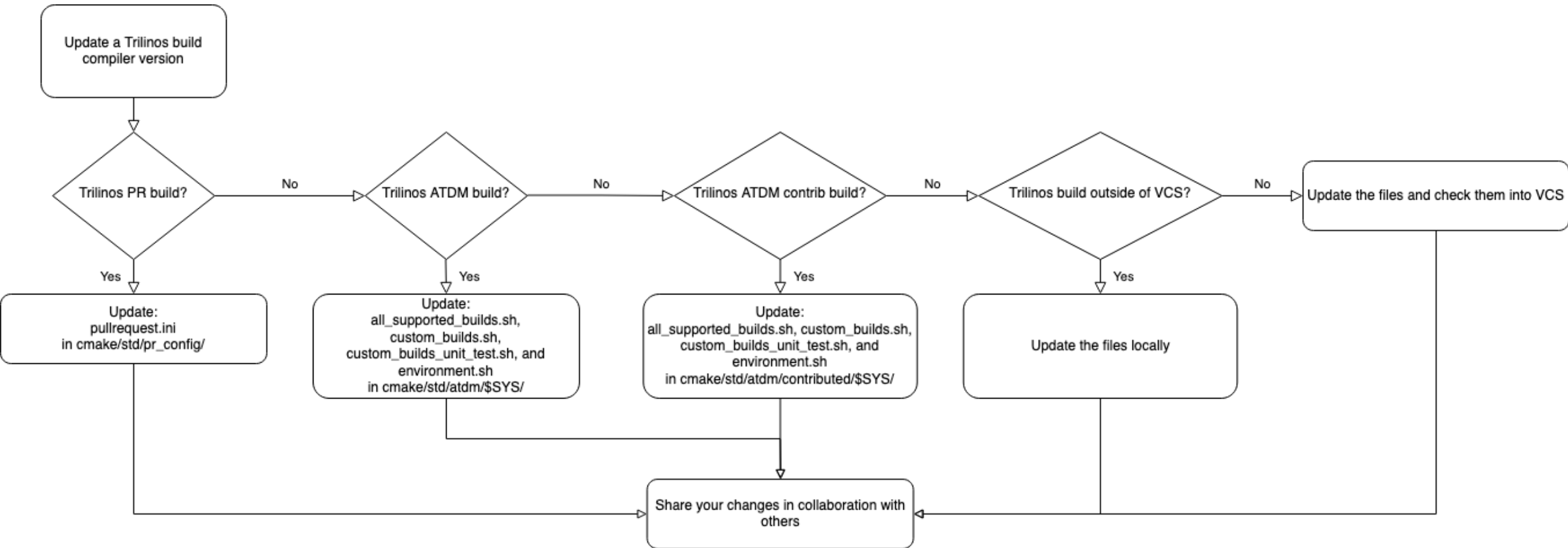
Sandia National Laboratories is a multimission laboratory managed and operated by National Technology & Engineering Solutions of Sandia, LLC, a wholly owned subsidiary of Honeywell International Inc., for the U.S. Department of Energy's National Nuclear Security Administration under contract DE-NA0003525.

PRESENTED BY

Evan Harvey, Joshua Braun, James Willenbring



Current approach to configuring Trilinos



This is complicated... I'll just send an email asking someone to update the compiler version.

Introduction to GenConfig



- Environment and cmake script tied to string
 - Complete configuration: *complete_config*
- Written in Python and unit-tested via pytest
 - 99% line coverage
- Offers two interfaces: CLI and API
 - CLI: *gen-config.sh*
 - API: *class gen_config.GenConfig*

How GenConfig uses LoadEnv



- LoadEnv also written in Python and unit-tested via pytest
 - 98% line coverage
- Environment tied to a
 - Complete environment name: *complete_env*
 - Note: *complete_config* begins with *complete_env*
- GenConfig loads environment via *class load_env.LoadEnv*
 - CLI: `gen-config.sh` modifies user's subshell
 - API: `gen_config.py` modifies python process

Developer use-case (gen-config.sh)



```
[josbrau@weaver11 build]$ source ~/GenConfig/gen-config.sh --list-configs
Using system 'rhel7' based on matching hostname 'weaver11'.
```

```
+=====+
| INFO: Please select one of the following complete configurations from |
| /home/josbrau/GenConfig/examples/trilinos/config-specs.ini |
| |
| - rhel7_sems-gnu-7.2.0-anaconda3-serial_debug_shared_no-kokkos-arch_no-asan_no-complex_no-fpic_no-mpi_no-pt_no-rdc_no-uvm_pr-framework |
| - rhel7_sems-gnu-7.2.0-openmpi-1.10.1-serial_debug_shared_no-kokkos-arch_no-asan_no-complex_no-fpic_mpi_no-pt_no-rdc_no-uvm_no-package-enables |
| - rhel7_sems-gnu-7.2.0-serial_release-debug_shared_no-kokkos-arch_no-asan_no-complex_no-fpic_no-mpi_no-pt_no-rdc_no-uvm_no-package-enables |
| - rhel7_sems-gnu-7.2.0-openmpi-1.10.1-serial_release-debug_shared_no-kokkos-arch_no-asan_no-complex_no-fpic_mpi_no-pt_no-rdc_no-uvm_pr |
| - rhel7_sems-gnu-7.2.0-openmpi-1.10.1-serial_release-debug_shared_no-kokkos-arch_no-asan_no-complex_no-fpic_mpi_no-pt_no-rdc_no-uvm_no-package-enables |
| - rhel7_sems-gnu-8.3.0-openmpi-1.10.1-openmp_release-debug_static_no-kokkos-arch_no-asan_no-complex_no-fpic_mpi_no-pt_no-rdc_no-uvm_pr |
| - rhel7_sems-gnu-8.3.0-openmpi-1.10.1-openmp_release-debug_static_no-kokkos-arch_no-asan_no-complex_no-fpic_mpi_no-pt_no-rdc_no-uvm_no-package-enables |
| - rhel7_sems-clang-7.0.1-openmpi-1.10.1-serial_release-debug_shared_no-kokkos-arch_no-asan_no-complex_no-fpic_mpi_no-pt_no-rdc_no-uvm_no-package-enables |
| - rhel7_sems-clang-9.0.0-openmpi-1.10.1-serial_release-debug_shared_no-kokkos-arch_no-asan_no-complex_no-fpic_mpi_no-pt_no-rdc_no-uvm_no-package-enables |
| - rhel7_sems-clang-10.0.0-openmpi-1.10.1-serial_release-debug_shared_no-kokkos-arch_no-asan_no-complex_no-fpic_mpi_no-pt_no-rdc_no-uvm_no-package-enables |
| - rhel7_cuda-10.1.105-gnu-7.2.0-mpich-rolling_release_static_Volta70_Power9_no-asan_complex_fpic_mpi_pt_no-rdc_no-uvm_no-package-enables |
| - rhel7_cuda-10.1.105-gnu-7.2.0-mpich-rolling_release_static_Volta70_Power9_no-asan_complex_fpic_mpi_pt_no-rdc_uvm_no-package-enables |
| - rhel7_sems-intel-17.0.1-mpich-3.2-serial_release-debug_static_no-kokkos-arch_no-asan_no-complex_fpic_mpi_no-pt_no-rdc_no-uvm_no-package-enables |
| - rhel7_sems-intel-19.0.5-mpich-3.2-serial_release-debug_static_no-kokkos-arch_no-asan_no-complex_fpic_mpi_no-pt_no-rdc_no-uvm_no-package-enables |
| |
+=====+
```

-----[Examples]-----

NOTE: In each of the following examples, GenConfig first runs LoadEnv to load the correct environment.

Run CMake Using Configure Flags from GenConfig:

```
source /path/to/gen-config.sh \
    <build-name> \
    /path/to/src
```

NOTE: /path/to/src must always be specified as the last command line argument UNLESS the --cmake-fragment flag is used.

Save CMake Fragment File to Use with CMake:

```
source /path/to/gen-config.sh \
    --cmake-fragment foo.cmake \
    <build-name>
```

```
cmake -C foo.cmake /path/to/src
```

Developer use-case (gen-config.sh)



```
[josbrau@weaver11 build]$ source ~/GenConfig/gen-config.sh --cmake-fragment cuda_10_1_105.cmake \  
> rhel7_cuda-10.1.105-gnu-7.2.0-spmi-rolling_release_static_Volta70_Power9_no-asan_complex_fpic_mpi_pt_no-rdc_uvm_no-package-enables
```

```
-----[ Examples ]-----  
  
NOTE: In each of the following examples, GenConfig first runs  
LoadEnv to load the correct environment.  
  
Run CMake Using Configure Flags from GenConfig:  
  
source /path/to/gen-config.sh \  
    <build-name> \  
    /path/to/src  
  
NOTE: /path/to/src must always be specified as the last command  
line argument UNLESS the --cmake-fragment flag is used.  
  
Save CMake Fragment File to Use with CMake:  
  
source /path/to/gen-config.sh \  
    --cmake-fragment foo.cmake \  
    <build-name>  
  
cmake -C foo.cmake /path/to/src
```


Developer use-case (gen-config.sh)



```
[josbrau@weaver11 build]$ source ~/GenConfig/gen-config.sh --cmake-fragment cuda_10_1_105.cmake \  
> rhel7_cuda-10.1.105-gnu-7.2.0-spmi-rolling_release_static_Volta70_Power9_no-asan_complex_fpic_mpi_pt_no-rtc_uvm_no-package-enables
```

```
*****  
ENVIRONMENT LOADED SUCCESSFULLY  
*****  
  
*****  
TYPE exit TO LEAVE THE ENVIRONMENT  
*****  
  
*****  
BEGIN CONFIGURATION  
*****  
  
Please run:  
  
$ cmake -C /path/to/fragment.cmake /path/to/src  
  
where "/path/to/fragment.cmake" is replaced with your generated cmake fragment file  
and "/path/to/src" is replaced with your build source.  
  
(rhel7_cuda-10.1.105-gnu-7.2.0-spmi-rolling) $ ls  
cuda_10_1_105.cmake  
(rhel7_cuda-10.1.105-gnu-7.2.0-spmi-rolling) $ cmake -C cuda_10_1_105.cmake ~/Trilinos/
```

```
-----[ Examples ]-----  
  
NOTE: In each of the following examples, GenConfig first runs  
LoadEnv to load the correct environment.  
  
Run CMake Using Configure Flags from GenConfig:  
  
source /path/to/gen-config.sh \  
    <build-name> \  
    /path/to/src  
  
NOTE: /path/to/src must always be specified as the last command  
line argument UNLESS the --cmake-fragment flag is used.  
  
Save CMake Fragment File to Use with CMake:  
  
source /path/to/gen-config.sh \  
    --cmake-fragment foo.cmake \  
    <build-name>  
  
cmake -C foo.cmake /path/to/src
```


- GenConfig uses LoadEnv to put the user into a subshell with the right environment loaded.



```
# example.py
from gen_config import GenConfig

build_name = "rhel7_cuda-10.1.105-gnu-7.2.0-mpmpi-rolling_release_static_Volta70_Power9_no-asan_complex_fpic_mpi_pt_no-rdc_uvm_no-package-enables"
gc = GenConfig(["--cmake-fragment", "cuda_10_1_105.cmake", build_name])
gc.write_cmake_fragment()
```

More information in the `GenConfig` class documentation:



Search docs

CONTENTS:

- GenConfig
- ConfigKeywordParser

» GenConfig [View page source](#)

GenConfig

`class gen_config.GenConfig(argv: List[str], gen_config_ini_file=PosixPath('/home/josbrau/builds/BP6WrctF/0/trilinos-devops-consolidation/code/GenConfig/src/gen-config.ini'))`

Bases: `keywordparser.FormattedMsg.FormattedMsg`

`GenConfig` is a utility to convert a build name into a set of configuration flags or CMake fragment file to be used with CMake. This is accomplished using `ConfigKeywordParser` and two configuration files:

1. `supported-config-flags.ini`: Lists the flags and corresponding options supported for parsing within `ConfigKeywordParser`.

```
# Example
# -----
# supported-config-flags.ini
#
# For full documentation on formatting, see
# GenConfig/examples/supported-config-flags.ini
#
[configure-flags]
use-mpi: SELECT_ONE
mpi # the first option is the default if neither is specified in the build name
```


9 Introduction to config-specs.ini



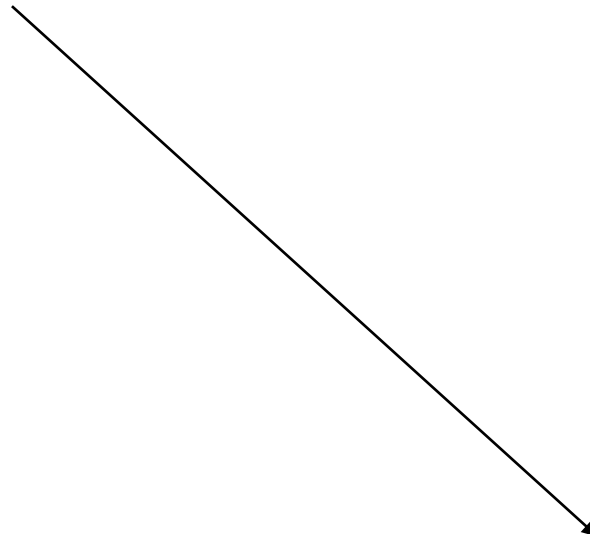
- Single file where every *complete_config* is defined
- Focuses on:
 - human readability
 - reusability
- For example, this is the config for the *python-3* PR job:

```
1139 [rhel7_sems-gnu-7.2.0-anaconda3-serial_debug_shared_no-kokkos-arch_no-asan_no-complex_no-fpic_no-mpi_no-pt_no-rdc_pr-framework]
1140 use RHEL7_SEMS_COMPILER|GNU
1141 use NODE-TYPE|SERIAL
1142 use BUILD-TYPE|DEBUG
1143 use RHEL7_SEMS_LIB-TYPE|SHARED
1144 use KOKKOS-ARCH|NO-KOKKOS-ARCH
1145 use RHEL7_SEMS_USE-ASAN|NO_USE-FPIC|NO_USE-MPI|NO_USE-PT|NO_PACKAGE-ENABLES|PR-FRAMEWORK
1146 use USE-COMPLEX|NO
1147 use USE-RDC|NO
1148
1149 use COMMON
```

Introduction to config-specs.ini



- *complete_config*

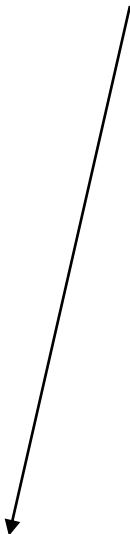


```
1139 [rhel7_sems-gnu-7.2.0-anaconda3-serial_debug_shared_no-kokkos-arch_no-asan_no-complex_no-fpic_no-mpi_no-pt_no-rdc_pr-framework]
1140 use RHEL7_SEMS_COMPILER|GNU
1141 use NODE-TYPE|SERIAL
1142 use BUILD-TYPE|DEBUG
1143 use RHEL7_SEMS_LIB-TYPE|SHARED
1144 use KOKKOS-ARCH|NO-KOKKOS-ARCH
1145 use RHEL7_SEMS_USE-ASAN|NO_USE-FPIC|NO_USE-MPI|NO_USE-PT|NO_PACKAGE-ENABLES|PR-FRAMEWORK
1146 use USE-COMPLEX|NO
1147 use USE-RDC|NO
1148
1149 use COMMON
```

Introduction to config-specs.ini



- *complete_env*

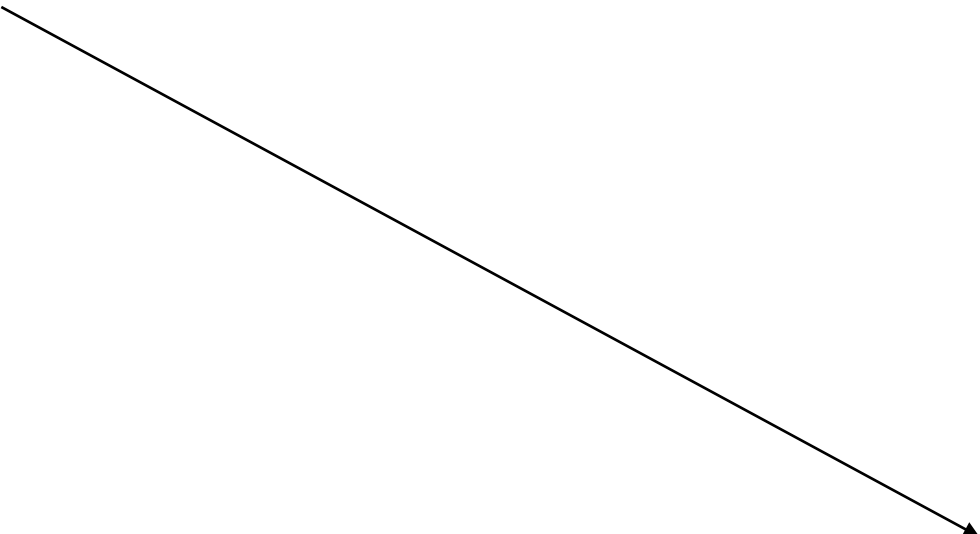


```
1139 [rhel7_sems-gnu-7.2.0-anaconda3-serial_debug_shared_no-kokkos-arch_no-asan_no-complex_no-fpic_no-mpi_no-pt_no-rdc_pr-framework]
1140 use RHEL7_SEMS_COMPILER|GNU ~
1141 use NODE-TYPE|SERIAL ~
1142 use BUILD-TYPE|DEBUG ~
1143 use RHEL7_SEMS_LIB-TYPE|SHARED ~
1144 use KOKKOS-ARCH|NO-KOKKOS-ARCH ~
1145 use RHEL7_SEMS_USE-ASAN|NO_USE-FPIC|NO_USE-MPI|NO_USE-PT|NO_PACKAGE-ENABLES|PR-FRAMEWORK ~
1146 use USE-COMPLEX|NO ~
1147 use USE-RDC|NO ~
1148
1149 use COMMON ~
```

Introduction to config-specs.ini



- Configure flags



```
1139 [rhel7_sems-gnu-7.2.0-anaconda3-serial_debug_shared_no-kokkos-arch_no-asan_no-complex_no-fpic_no-mpi_no-pt_no-rdc_pr-framework]
1140 use RHEL7_SEMS_COMPILER|GNU
1141 use NODE-TYPE|SERIAL
1142 use BUILD-TYPE|DEBUG
1143 use RHEL7_SEMS_LIB-TYPE|SHARED
1144 use KOKKOS-ARCH|NO-KOKKOS-ARCH
1145 use RHEL7_SEMS_USE-ASAN|NO_USE-FPIC|NO_USE-MPI|NO_USE-PT|NO_PACKAGE-ENABLES|PR-FRAMEWORK
1146 use USE-COMPLEX|NO
1147 use USE-RDC|NO
1148
1149 use COMMON
```

Introduction to config-specs.ini



- Common code for 'debug' build type:

```
409 [BUILD-TYPE|DEBUG]
410 opt-set-cmake-var CMAKE_BUILD_TYPE          STRING : DEBUG
411 opt-set-cmake-var Trilinos_ENABLE_DEBUG      BOOL   : ON
412 # Intrepid2 will not build with bounds check enabled:
413 # coreKokkos_Array.hpp:152:57: error: array subscript is below array bounds [-Werror=array-bounds]
414 opt-set-cmake-var Kokkos_ENABLE_DEBUG_BOUNDS_CHECK BOOL : OFF
415 opt-set-cmake-var Kokkos_ENABLE_DEBUG        BOOL   : ON
```

- Build type flag

```
1139 [rhel7_sems-gnu-7.2.0-anaconda3-serial_debug_shared_no-kokkos-arch_no-asan_no-complex_no-fpic_no-mpi_no-pt_no-rdc_pr-framework]
1140 use RHEL7_SEMS_COMPILER|GNU
1141 use NODE-TYPE|SERIAL
1142 use BUILD-TYPE|DEBUG
1143 use RHEL7_SEMS_LIB-TYPE|SHARED
1144 use KOKKOS-ARCH|NO-KOKKOS-ARCH
1145 use RHEL7_SEMS_USE-ASAN|NO_USE-FPIC|NO_USE-MPI|NO_USE-PT|NO_PACKAGE-ENABLES|PR-FRAMEWORK
1146 use USE-COMPLEX|NO
1147 use USE-RDC|NO
1148
1149 use COMMON
```


Changing config-specs.ini to use a new build type



Draft: Tug16 config spec demo

Overview 0 Commits 1 Pipelines 1 Changes 1

Compare master and latest version

1 file +2 -2



examples/trilinos/config-specs.ini

+2 -2



Show all unchanged lines Show 20 lines

1136	1136	
1137	1137	# Full configurations intended to be loaded.
1138	1138	
1139		- [rhel7_sems-gnu-7.2.0-anaconda3-serial_debug_shared_no-kokkos-arch_no-asan_no-complex_no-fpic_no-mpi_no-pt_no-rdc_pr-framework]
	1139	+ [rhel7_sems-gnu-7.2.0-anaconda3-serial_release_shared_no-kokkos-arch_no-asan_no-complex_no-fpic_no-mpi_no-pt_no-rdc_pr-framework]
1140	1140	use RHEL7_SEMS_COMPILER GNU
1141	1141	use NODE-TYPE SERIAL
1142		- use BUILD-TYPE DEBUG
	1142	+ use BUILD-TYPE RELEASE
1143	1143	use RHEL7_SEMS_LIB-TYPE SHARED
1144	1144	use KOKKOS-ARCH NO-KOKKOS-ARCH
1145	1145	use RHEL7_SEMS_USE-ASAN NO_USE-FPIC NO_USE-MPI NO_USE-PT NO_PACKAGE-ENABLES PR-FRAMEWORK

Show 20 lines Show all unchanged lines

Changing config-specs.ini to use a new build type



Draft: Tug16 config spec demo

Overview 0 Commits 1 Pipelines 1 Changes 1

Compare master and latest version

1 file +2 -2



examples/trilinos/config-specs.ini

+2 -2



Show all unchanged lines Show 20 lines

1136	1136	
1137	1137	# Full configurations intended to be loaded.
1138	1138	
1139		- [rhel7_sems-gnu-7.2.0-anaconda3-serial_debug_shared_no-kokkos-arch_no-asan_no-complex_no-fpic_no-mpi_no-pt_no-rdc_pr-framework]
	1139	+ [rhel7_sems-gnu-7.2.0-anaconda3-serial_release_shared_no-kokkos-arch_no-asan_no-complex_no-fpic_no-mpi_no-pt_no-rdc_pr-framework]
1140	1140	use RHEL7_SEMS_COMPILER GNU
1141	1141	use NODE-TYPE SERIAL
1142		- use BUILD-TYPE DEBUG
	1142	+ use BUILD-TYPE RELEASE
1143	1143	use RHEL7_SEMS_LIB-TYPE SHARED
1144	1144	use KOKKOS-ARCH NO-KOKKOS-ARCH
1145	1145	use RHEL7_SEMS_USE-ASAN NO_USE-FPIC NO_USE-MPI NO_USE-PT NO_PACKAGE-ENABLES PR-FRAMEWORK

Show 20 lines Show all unchanged lines

Changing config-specs.ini causes test failures



Draft: Tug16 config spec demo

Overview 0 Commits 1 Pipelines 1 Changes 1

Request to merge `tug16_config_spec_d...` into `master` [Open in Web IDE](#) [Check out branch](#) [Download](#)

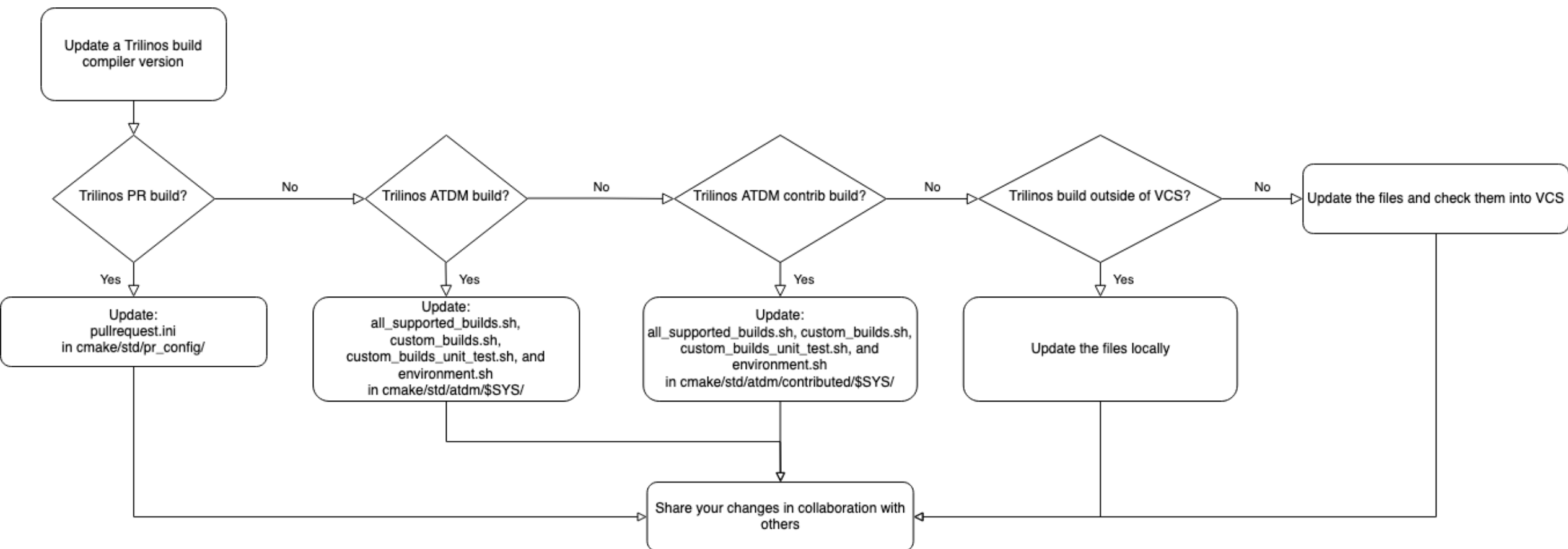
✖ Pipeline #13882 failed for `edad408c` on `tug16_config_spec_d...` ✖

Since config-specs.ini is verified via pytest, the change causes this test failure:

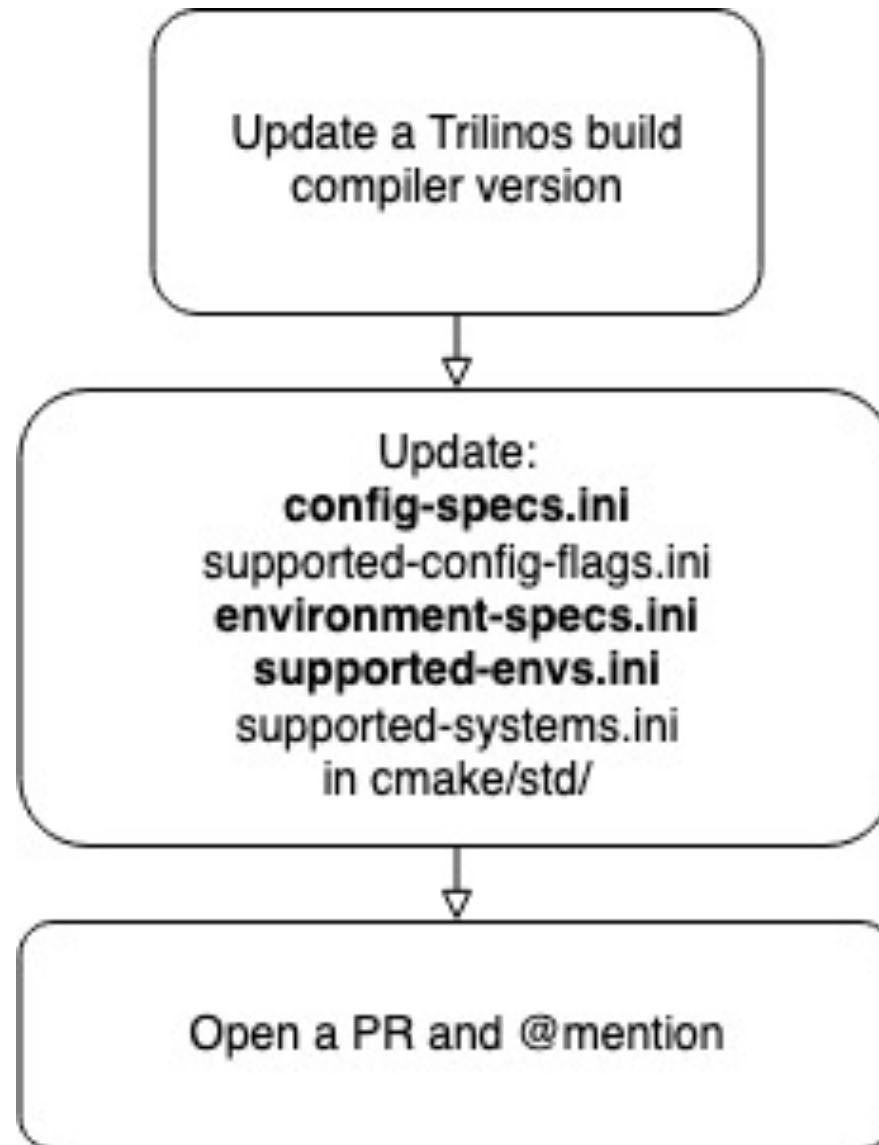
```

154 tests/verification_tests/test_verify_trilinos_configs.py::Test_verify_rhel7_configs::test_all_configs_are_in_map FAILED [ 87%]
155 tests/verification_tests/test_verify_trilinos_configs.py::Test_verify_rhel7_configs::test_rhel7_sems_clang_10_0_0_openmpi_1_10_1_serial_release_debug_shared_no_kokkos_arch_no_asan_no_complex_no_fpic_mpi_no_pt_no_rdc_no_package_enables SKIPPED [ 88%]
156 tests/verification_tests/test_verify_trilinos_configs.py::Test_verify_rhel7_configs::test_rhel7_sems_gnu_7_2_0_anaconda3_serial_debug_shared_no_kokkos_arch_no_asan_no_complex_no_fpic_mpi_no_pt_no_rdc_pr_framework SKIPPED [ 90%]
157 tests/verification_tests/test_verify_trilinos_configs.py::Test_verify_rhel7_configs::test_rhel7_sems_gnu_7_2_0_openmpi_1_10_1_serial_release_debug_shared_no_kokkos_arch_no_asan_no_complex_no_fpic_mpi_no_pt_no_rdc_no_package_enables SKIPPED [ 91%]
158 tests/verification_tests/test_verify_trilinos_configs.py::Test_verify_rhel7_configs::test_rhel7_sems_gnu_7_2_0_serial_release_debug_shared_no_kokkos_arch_no_asan_no_complex_no_fpic_mpi_no_pt_no_rdc_no_package_enables SKIPPED [ 92%]
159 tests/verification_tests/test_verify_trilinos_configs.py::Test_verify_rhel7_configs::test_rhel7_sems_gnu_8_3_0_openmpi_1_10_1_openmp_release_debug_static_no_kokkos_arch_no_asan_no_complex_no_fpic_mpi_no_pt_no_rdc_no_package_enables SKIPPED [ 93%]
160 tests/verification_tests/test_verify_trilinos_configs.py::Test_verify_rhel7_configs::test_rhel7_sems_intel_17_0_1_mpich_3_2_serial_release_debug_static_no_kokkos_arch_no_asan_no_complex_fpic_mpi_no_pt_no_rdc_no_package_enables SKIPPED [ 95%]
161 tests/verification_tests/test_verify_trilinos_configs.py::Test_verify_rhel7_configs::test_rhel7_sems_intel_19_0_5_mpich_3_2_serial_release_debug_static_no_kokkos_arch_no_asan_no_complex_fpic_mpi_no_pt_no_rdc_no_package_enables SKIPPED [ 96%]
162 tests/verification_tests/test_verify_trilinos_configs.py::Test_verify_ats2_configs::test_all_configs_are_in_map PASSED [ 97%]
163 tests/verification_tests/test_verify_trilinos_configs.py::Test_verify_ats2_configs::test_ats2_cuda_10_1_243_gnu_8_3_1_spmi_rolling_release_static_Volta70_Power9_no_asan_no_complex_no_fpic_mpi_pt_no_rdc_no_package_enables SKIPPED [ 98%]
164 tests/verification_tests/test_verify_trilinos_configs.py::Test_verify_ats2_configs::test_ats2_cuda_10_1_243_gnu_8_3_1_spmi_rolling_release_static_Volta70_Power9_no_asan_no_complex_no_fpic_mpi_pt_rdc_no_package_enables SKIPPED [100%]
165 ===== FAILURES =====
166 _____ Test_verify_rhel7_configs.test_all_configs_are_in_map _____

```



New use-case: ini files as a common language



How GenConfig supports collaboration via ini files



- Parses single file: config-specs.ini
- Documentation resides in config-specs.ini
- Supports developer use-case:
 - Dev gets something working locally
 - Copy and paste into ini files under VCS
 - GenConfig takes care of translation
 - No need to translate from a cmake command line or cmake fragment file
- Rather than a potentially ambiguous email, config-specs.ini provides a testable common language

Special thanks to

- Dena Vigil
- Roscoe Bartlett
- Jason Gates
- David Collins
- Trilinos Framework Team

